

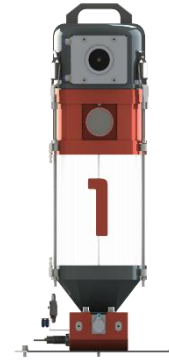
Technical specifications and Advantages of using DOSOMAC CWD Weigher

- **Dosomac** height from support table **2.05m**.

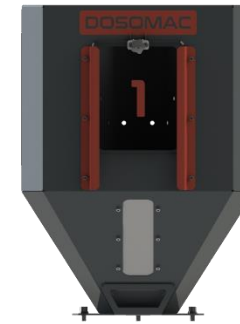
DOSOMAC
Dosing by Software Perfection



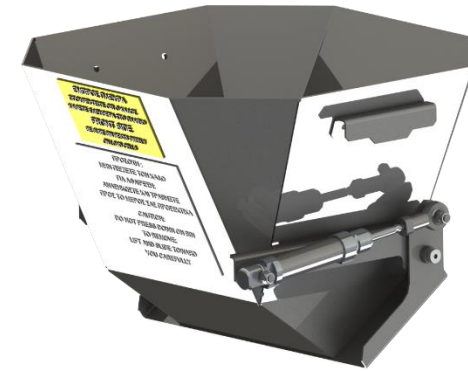
- Receivers capacity **8Lt**.



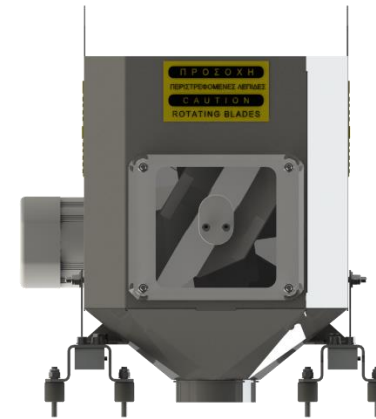
- Hopper capacity **32Lt.**



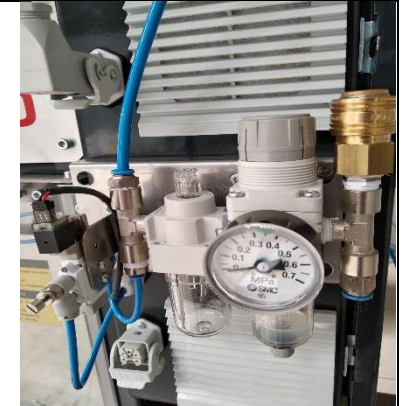
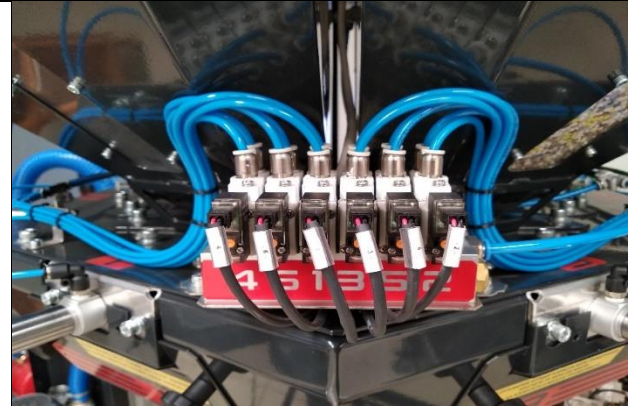
- Bach Bin **3Lt.**



- Mixing Bin 10Lt.



- Air circuit 4-5 bar.



- Vacuum 2.2kw/3kw/5.5Kw.



- Production up to **500Kg / Hr**

- Dosing and mixing, with per gram weighing of all materials, with absolute accuracy and continuous mixing.

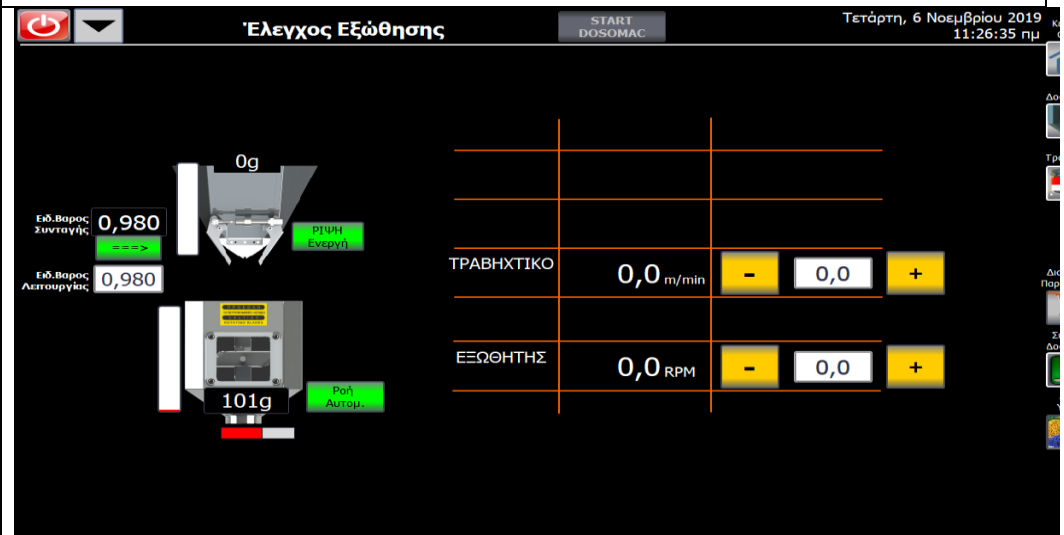
- Saving at least **20%** in master batch and additives.

- Mixing of all materials with **0.1%** accuracy.

- Per gram weighing of material during the feeding of the extruder and automatic production control.

- **Extrusion Control** Automatic set up and operation of the Extruders.

The operator sets the desired film thickness and kilos per hour. DOSOMAC CWD does the rest automatically. Controls the screw rotations, hence the quantity of the material. Also controls the torque of the puller, hence the thickness.



- The system controls the weight and thickness of the product obtained with **0.5%** accuracy.

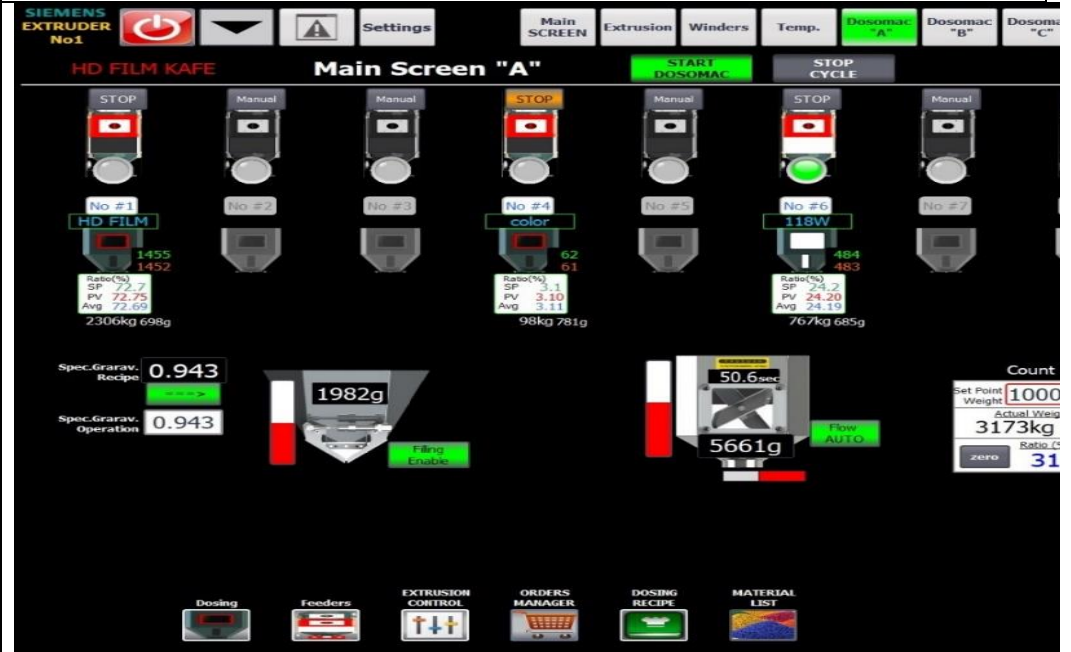
- **50%** reduction of start time and switching of production conditions.

- Minimizing of raw materials wastage, as well as elimination of problems related to production.

- Easy access to all mechanical parts of **DOSOMAC** CWD is ensured for cleaning and maintenance.



- Easy to use, due to its simplified interface.

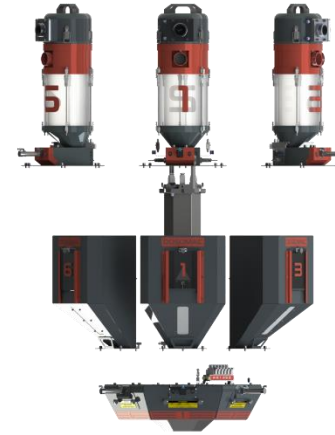


- Fully modular design for easy conversion from **2 to 8 materials**.

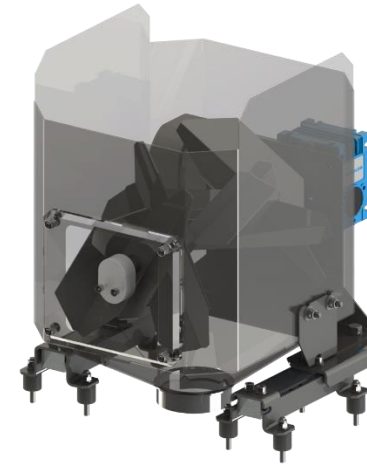


- Reduced installation cost with integrated factory wiring.

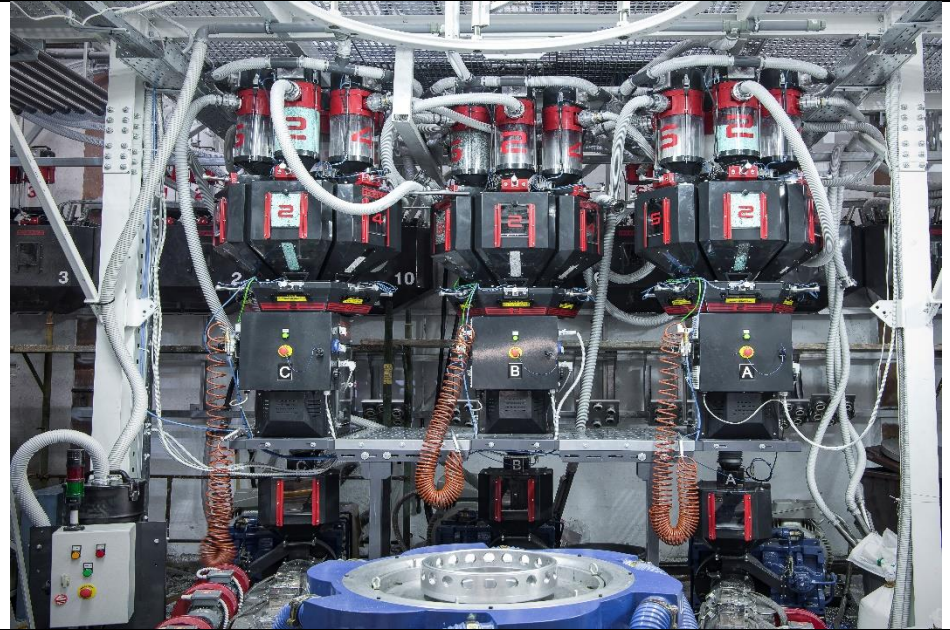
- Fully automated system for material loading to receivers with use of three-phase vacuum pump.



- Integrated mixing bin with specially designed stirred for optimal homogenisation of the blend.



- **Dosomac** support table for reduced vibrations (enhanced accuracy), as well as for easy access of the operator for maintenance purposes.



- **36.3 Lt** buffer for connection between the cannon entrance and **Dosomac** with material exit on the side.

